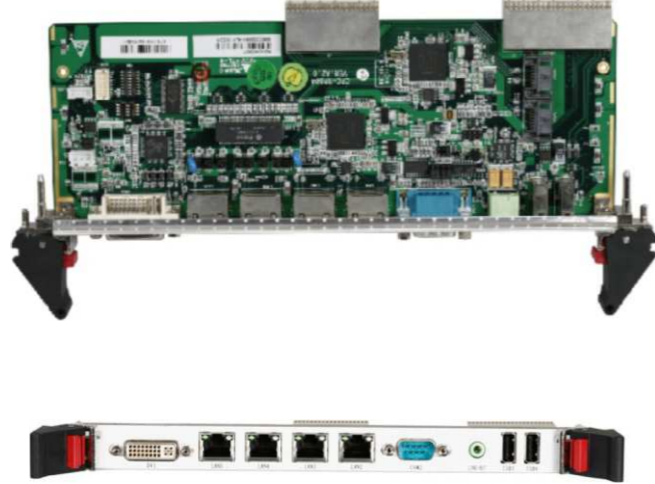
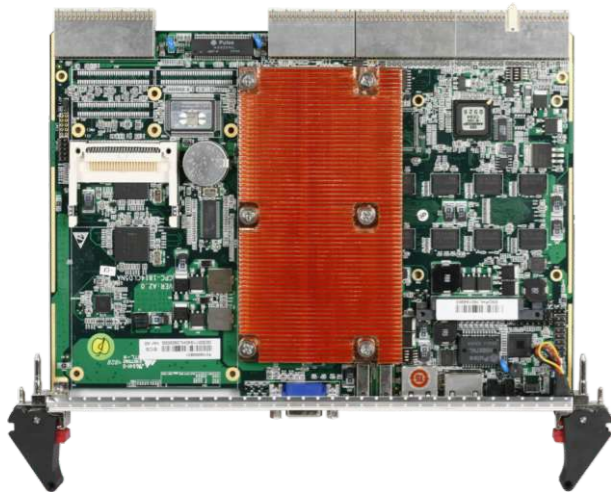


# CPC-1814CL5DNA

6U CompactPCI Intel® Core™ 2 Duo Processor blade



## Features

- Onboard Intel Core™ 2 Duo L7500 1.6GHz processor, optional T7500 2.2GHz
- Adopts fanless design, supports wide operating temperature
- Onboard 2GB DDR2 667 dual channel memory
- Supports 32/64bit, 33/66MHz CompactPCI bus
- Supports 1 x 32bit/33MHz, 3.3V/5V PMC module, optional CF socket
- Supports one onboard 2.5" SATA hard disk
- Supports 5 x Intel Gigabit Ethernet port
- Available 6U rear I/O boards: CPC-RP804, CPC-RP804B, CPC-RP804R and CPC-RP805

## Specifications

System	
Processor	Onboard Intel® Core™ 2 Duo L7500 1.6GHz low-power processor, with 4MB L2 Cache, 800MHz FSB Onboard Intel Core™ 2 Duo T7500 2.2GHz mobile processor, with 4MB L2 Cache, 800MHz FSB
Chipset	Intel GME 965 + ICH8M
Memory	Onboard 2GB DDR2 667(Non-ECC) dual channel system memory
Hardware Monitor	Monitors system status, voltage, temperature and fan speed etc.
Watchdog Timer	1~255 sec./min. timer system reset or interrupt, setup by software
CompactPCI Standards	Compliant with: PICMG2.0 CompactPCI R3.0 PICMG2.1 Hot Swap R2.0 PICMG2.3 PMC R1.0 PICMG2.16 Packet Switching Backplane R1.0
CompactPCI Bus	Supports 32/64bit, 33/66MHz CompactPCI bus
PMC Interface	3.3V/ 5V universal CompactPCI signal voltage compliant Supports one 32bit/33MHz PMC interface, compliant with 3.3V/ 5V signal voltage

CPC-1814 Series	CPC-RP804 Series	CPC-RP805
<b>Storage Interface</b>		
SATA	Onboard 1 x 2.5" SATA bay	2 x SATA 300MB/s interface 1 x SATA 300MB/s interface (with power supply and signal connector)
SAS	N/A	2 x SAS, supporting RAID 0,1(CPC-RP-804R)
CF	1 x CF Socket Type I/II (occupies the PMC position)	N/A
<b>I/O Interface</b>		
USB	2 x USB2.0 port	2 x USB2.0 port
Serial Port	1 x RS232(RJ45 port)	1 x RS232/422/485(DB9 port)
GPIO	4 x GPI, 4 x GPO	N/A
Audio	N/A	Realtek ALC888 1 x Line-out port, supports HD Audio
KB/MS	1 x PS/2(KB/MS) port	1 x PS/2 for KB/MS (onboard 8-pin header)
Display Port	1 x VGA	1 x LVDS or DVI-I 1 x DVI-I, 1 x LVDS

Note: CF socket and PMC share the same installation space, and can't be selected simultaneously.

	CPC-1814 Series	CPC-RP804 Series	CPC-RP805
<b>Ethernet</b>			
Chipset	1 x Intel 82566 2 x Intel 82573E	2 x Intel 82573E(CPC-RP804)	N/A
Connector	1 x RJ-45	2 x RJ-45(CPC-RP804B/R) 4 x RJ-45(CPC-RP804)	N/A

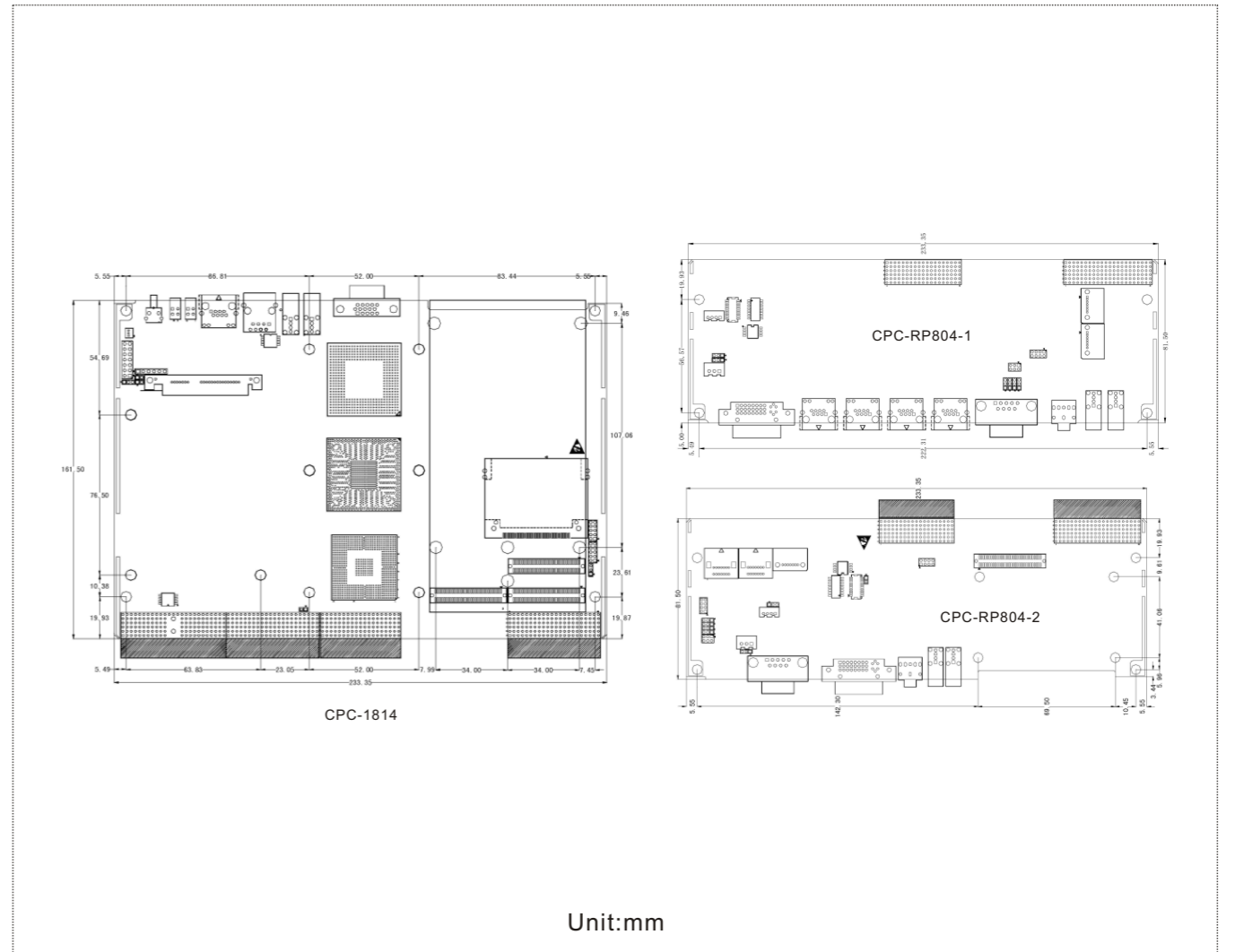
Display	
Chipset	Intel GME965 integrated GMA X3100 at 500MHz
Memory	256MB shared memory
Resolution	VGA mode up to 2048 x 1536@75Hz One 24bit LVDS display interface, optional DVI display port on rear I/O board
Dual Display	Supports CRT+LVDS or CRT+DVI dual independent display

Mechanical and Environmental	
Dimensions	CPC-1814CLD5NA /CPC-1814CLD5NA-N: 6U 4HP CompactPCI system board, 233.33mm(H) x 161.51mm(D) CPC-RP804/ CPC-RP804B/ CPC-RP804R/CPC-RP805: 6U 4HP CompactPCI rear I/O board, 233.33mm(H) x 81.5mm(D)
Operating Temperature	-10°C~60°C(with T7500 2.2GHz processor) -20°C~70°C, optional -40°C~80°C (with L7500 1.6GHz processor)
Storage Temperature	-45°C~85°C
Operating Humidity	5%-95%, non-condensing

Power	
Power Supply	Supports CompactPCI and ATX power supply
Power Consumption	Typical 30W (CPU: L7500 1.6GHz, memory: 2GB DDR2 667 ) Typical 45W (CPU: T7500 2.2GHz, memory: 2GB DDR2 667 )

Operating System	
Supported OS	Windows XP Professional Windows XP Embedded Windows 2003 Server Red Hat Enterprise Linux(RHEL) 5.2 VxWorks (Note: Please contact EVOC for other OS support)

## Dimensions



## Ordering Information

Part Number	Model Number	Description
0030-017241	CPC-1814CLD5NA-N1.6-CF	CPC-1814CLD5NA-N Series/Onboard L7500 1.6GHz CPU+GME965/onboard 2GB RAM/1 x CF socket/1 x RS232 serial port (RJ45) /1 x VGA port/2 x USB2.0/1 x GbE LAN port/-20°C~70°C
0030-017231	CPC-1814CLD5NA-N1.6-PMC	CPC-1814CLD5NA-N Series/Onboard L7500 1.6GHz CPU+GME965/onboard 2GB RAM/1 x PMC/1 x RS232 serial port (RJ45) /1 x VGA port/2 x USB2.0/1 x GbE LAN port/-20°C~70°C
0030-017371	CPC-1814CLD5NA-N2.2-CF	CPC-1814CLD5NA-N Series/Onboard T7500 2.2GHz CPU+GME965/onboard 2GB RAM/1 x CF socket/1 x RS232 serial port (RJ45) /1 x VGA port/2 x USB2.0/1 x GbE LAN port/-10°C~60°C
0030-017221	CPC-1814CLD5NA-N2.2-PMC	CPC-1814CLD5NA-N Series/Onboard T7500 2.2GHz CPU+GME965/onboard 2GB RAM/1 x PMC/1 x RS232 serial port (RJ45) /1 x VGA port/2 x USB2.0/1 x GbE LAN port/-10°C~60°C
0060-004621	CPC-RP804B	CPC-1814CLD5NA-N rear I/O board/2 x Giga LAN port/2 x SATA/2 x USB2.0/1 x RS-232/422/485(DB9&onboard header)/1 x PS/2(KB/MS)/1 x DVI/LVDS/VGA/1 x audio output
0060-004631	CPC-RP804R	CPC-1814CLD5NA-N rear I/O board/2 x Giga LAN port/2 x SATA/2 x SAS(supporting Raid0,1)/2 x USB2.0/1 x RS-232/422/485(DB9&onboard header)/1 x PS/2(KB/MS)/1 x DVI/LVDS/VGA/1 x audio output port