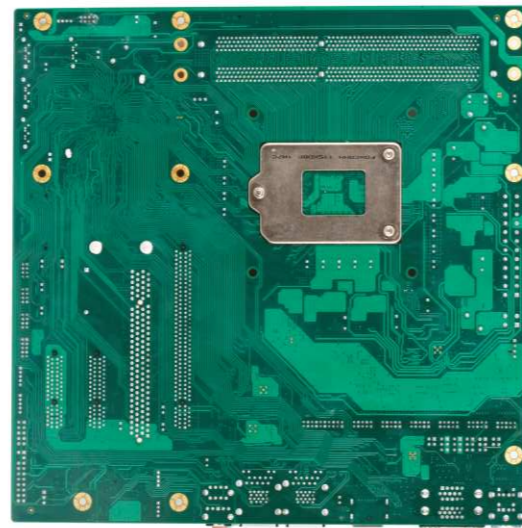


EC9-1817V2NA

Embedded ATX SBC with Intel® LGA1155 CPU and 2VGA/DVI/DP/2LAN/Audio



Features

- Embedded ATX SBC onboard Socket LGA1155 Intel® Core™ i3/i5/i7 series processors
- Supports 2 x 240-pin DIMM slot, up to 16GB DDR3 1066/1333MHz
- Supports 2 x VGA, 1 x DVI-D, 1 x Display port
- Supports 2 x 10/100/1000Mbps Ethernet interface
- Supports 1 x PCI-E x16, 2 x PCI-E x4, 1 x PCI expansion slot
- Supports 10 x USB, 6 x COM, 4 x SATA, 1 x m-SATA, 1 x LPC, 1 x 8-bit DIO, 1 x TPM/TCM, 1 x PS/2

Specifications

System

| | |
|---------------------|---|
| Processor | Supports LGA1155 socket Intel® Core™ Ivy bridge and Sandy bridge series CPU |
| Chipset | Intel® B75 |
| Memory | Supports 2 x 240-Pin DDR3 DIMM slot, up to 16GB |
| Hardware Monitor | Monitors operating voltage, the temperature of CPU and chassis |
| Watchdog Timer | 1~255 sec./min. timer system reset or interrupt, setup by software |
| Expansion Interface | 1 x PCI-E x16, 2 x PCI-E x4, 1 x PCI, 1 x LPC |

Storage

| | |
|------------|---------------------------------------|
| IDE | N/A |
| Serial ATA | 3 x SATA 2.0, 1 x SATA3.0, 1 x m-SATA |
| Floppy | N/A |
| CF | N/A |

I/O Interface

| | |
|-------------|--|
| USB | 6 x USB2.0, 4 x USB3.0 |
| Serial Port | 6 x COM(COM1, 2 support RS232/RS485 mode selection) |
| TPM/TCM | 1 x TPM/TCM |
| SMBus | 1 x SMBus |
| Digital IO | 1 x 8-bit Digital IO |
| Audio | Adopts ALC892-GR audio chip, supports HD Audio, available interfaces of Mic-in, Line-in and Line-out |

Display

| | |
|----------------|---|
| Chipset | Intel® B75 Integrated Graphics |
| Memory | N/A |
| Resolution | VGA mode: up to 2048 x 1536@75Hz DVI mode: up to 1920 x 1200@60Hz DP mode: up to 2560 x 1600@60Hz |
| Dual Display | VGA, LVDS, DVI dual display |
| Triple Display | DP + VGA1 + VGA2; DP + DVI + VGA2 (only for Win7) |

Ethernet

| | |
|-----------|---|
| Chipset | 1 x Intel®WG82583V, 1 x Intel®WG82579LM |
| Speed | 2 x 10/100/1000Mbps |
| Connector | 2 x RJ45 |

Mechanical and Environmental

| | |
|-----------------------|-------------------------------------|
| Dimensions | 243.84mm(L) x 243.84mm(W) x 80mm(H) |
| Operating Temperature | 0°C~60°C |
| Storage Temperature | -20°C~75°C |
| Operating Humidity | 5%~95%, non-condensing |

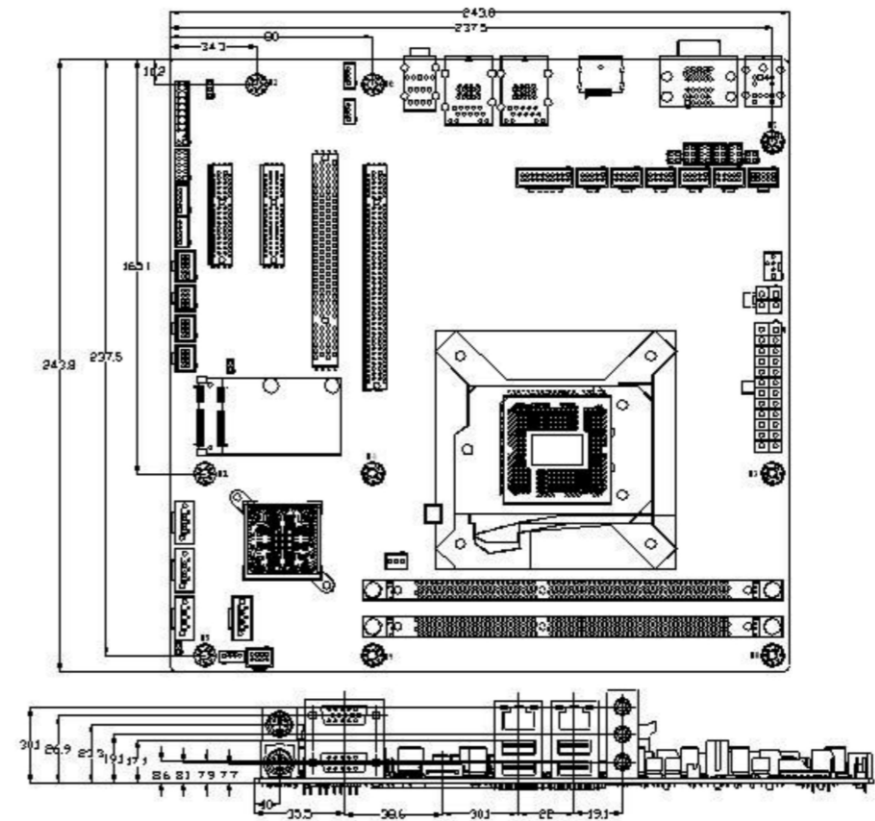
Power

| | |
|-------------------|------------------|
| Power Supply | ATX power supply |
| Power Consumption | N/A |

Operating System

| | |
|-------------|----------------------|
| Windows OS | Windows 7/Windows XP |
| Embedded OS | Linux |

Dimensions



Unit:mm

Packing List

| |
|-------------------------------------|
| 1 x Driver DVD/protective film/RoHS |
| 1 x I/O bracket/ EC9-1817V2NA/RoHS |
| 2 x SATA HDD flat cable/RoHS |
| 1 x USB cable /RoHS |
| 1 x Serial port cable/RoHS |

Ordering Information

| Part Number | Model Number | Description |
|-------------|--------------|---|
| 0030-019221 | EC9-1817V2NA | Micro ATX SBC/B75 Chipset/Ivy Bridge/Sandy Bridge LGA1155 dual, Quad Processor/2x240PIN 1600/1333/1066MHz DDR3 Memory Slot, up to 16GB/1xDP, 2xVGA, 1xDVI/2x1000Mbps Ethernet/4xSATA/1xmSATA/6xUSB2.0/4xUSB3.0/6xCOM/1xPCI/1xPCI-Ex16/1xPCI-Ex4/1xPCI-Ex1 |