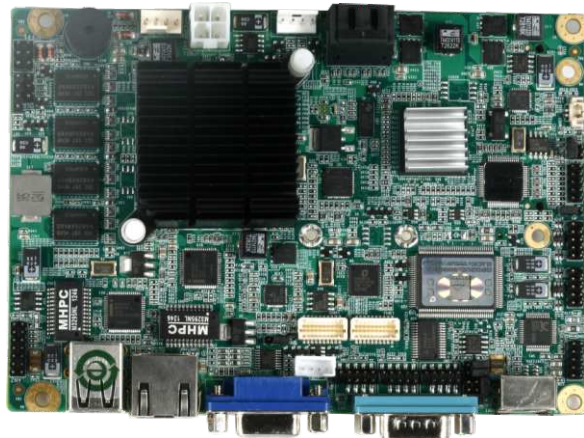


EC3-1816CLD2NA

3.5" SBC third-generation Atom with onboard CPU/LVDS/VGA /CF/2LAN/Audio



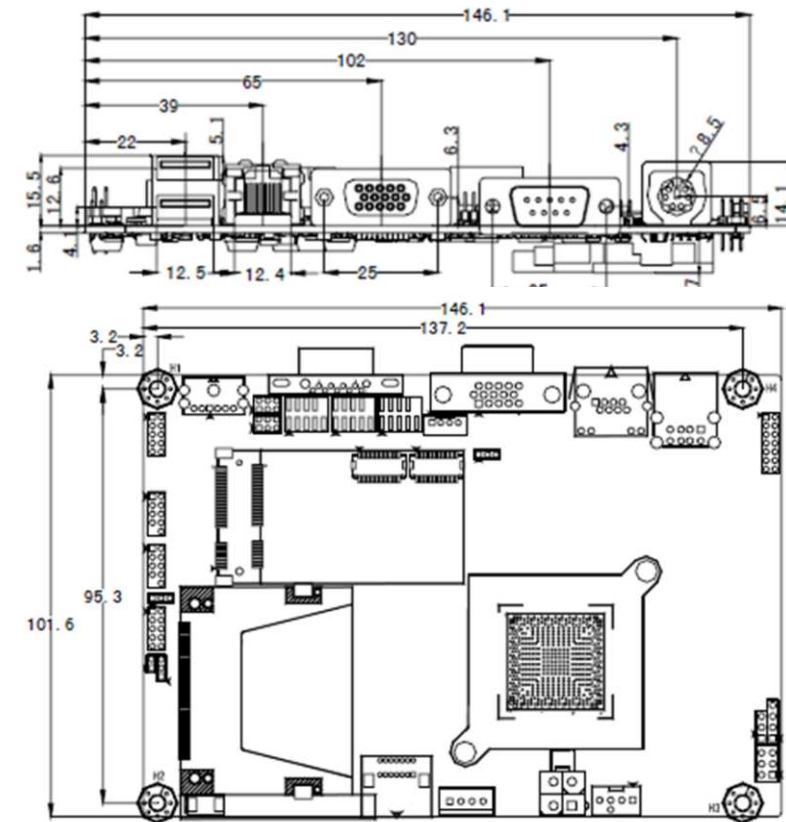
Features

- Adopts Intel® Atom™ D2550/N2600 low power processor
- Supports dual-channel 24BIT LVDS display, and can be connected to various large display screens
- Onboard 2G memory, with excellent anti-shock performance
- Onboard MINI PCI_E slot, to facilitate expansion to wireless LAN

Specifications

Processor	Onboard Intel® Atom™ D2550 1.86GHz/N2600 1.6GHz processor
Chipset	Intel® Atom™ D2550 /N2600 +NM10
Memory	Onboard 2G DDR III memory
Display ports	Supports VGA+LVDS (dual-channel 24Bit) dual display
Audio	HDA standard chip, supporting MIC-IN, LINE-IN and LINE-OUT
LAN	Provides 2 x 10/100/1000Mbps LAN port; LAN1 uses standard RJ45 port and supports Wake-On-LAN; LAN2 is brought out via a 2x7Pin pin header port
Storage	2 x SATA interface or 1 x SATA interface and 1 x TYPE I/II CompactFlash socket
I/O ports	4 x COM port; COM1 is a DB9 connector, supporting Modem Wakeup, the other three are brought out via 2x5Pin pin header; COM2 supports RS-232/RS-422/RS-485 mode, the other three only support RS-232 mode. 1 x Mini PCIE slot 1 x CF card slot 2 x SATA interface 1 x HD Audio port, brought out via 2x5Pin pin header 6 x USB2.0 port; 2 are directly brought out by connector, the other two are brought out via 2x5Pin pin header 1 x PS/2 port, brought out via 2-in-1 port 1 x 8-channel digital I/O port, brought out via 2x5Pin pin header
Expansion bus	Provides Mini PCIe slot, expandable to wireless LAN
Operating temperature	0°C~60°C, extendable to -20°C~60°C; -20°C~70°C (with fan to dissipate heat); 5%~95% (non-condensing)
Storage environment	-40°C~80°C, 5%~95% (non-condensing)
Watchdog	255 levels, programmable by sec./min., timeout interrupt or system reset
Power	Standard 2x2pin ATX 12V power connector, supporting single 12V power supply
Others	/
Dimensions (WxD)	146.1mm x 101.6mm

Dimensions



Ordering Information

Part Number	Model Number	Description
0030-019651	EC3-1816CLD2NA-D2550	3.5-inch single board/onboard D2550 CPU 1.86GHz/onboard 2GB DDR3 memory/VGA/LVDS(24Bit dual-channel)/6 x USB2.0/1 x PS2/3 x RS232, 1 x RS232/485/1 x Mini PCIE/1 x CF slot/2 x 1000Mbps LAN port/2 x SATA/single 12V power supply/0°C~60°C/Note: 2 x SATA or 1 x SATA plus 1 x CF slot (2 x SATA and 1 x CF card cannot be used at same time)/The motherboard has fan
0030-019661	EC3-1816CLD2NA-N2600	3.5-inch single board/onboard N2600 CPU 1.6GHz/onboard 2GB DDR3 memory/VGA/LVDS(24Bit dual-channel)/6 x USB2.0/1 x PS2/3 x RS232, 1 x RS232/485/1 x Mini PCIE/1 x CF slot/2 x 1000Mbps LAN port/2 x SATA/single 12V power supply/0°C~60°C/Note: 2 x SATA or 1 x SATA plus 1 x CF slot (2 x SATA and 1 x CF card cannot be used at same time)/The motherboard has no fan
0030-019671	EC3-1816CLD2NA-DW	3.5-inch single board/onboard D2550 CPU 1.86GHz/onboard 2GB DDR3 memory/VGA/LVDS(24Bit dual-channel)/6 x USB2.0/1 x PS2/3 x RS232, 1 x RS232/485/1 x Mini PCIE/1 x CF slot/2 x 1000Mbps LAN port/2 x SATA/single 12V power supply/0°C~60°C/Note: 2 x SATA or 1 x SATA plus 1 x CF slot (2 x SATA and 1 x CF card cannot be used at same time)/The motherboard has no fan

1

Embedded Boards & Industrial Computers

2

Embedded Systems

3

Communications & Network Application Platform

4

Rugged Computers

1

Embedded Boards & Industrial Computers

2

Embedded Systems

3

Communications & Network Application Platform

4

Rugged Computers